

PROSPECTUS





WELCOME TO ST MATTHIAS

The original St Matthias was a small chapel built in 1877 on Deans Road. It provided services for local people including weddings, christenings and funerals. In 1968 it was demolished to make way for Deansfield School.

In September 2015 the new St Matthias building opened to replace the old and tired Deansfield school building. St Matthias has been described by parents as ‘the school we have been waiting for’. Everyone at the school agrees that it has led to a significant change in the way children learn. Staff and students at St Matthias love working in their modern, light, hi-tech and well resourced building.

The opportunities for young people at St Matthias are excellent. Students are supported by highly skilled staff who make sure they achieve some of the best exam outcomes in the country. Success is not just about exam results and at St Matthias there is an emphasis on developing each child to be confident, aware of themselves, respectful to others and well prepared for further education and the world of work.

Expectations are set high and students at St Matthias know only their best is acceptable. Young people at St Matthias know they must, ‘dress smart, work smart and stay smart to be smart.’

In November 2019 St Matthias was graded by Ofsted as a ‘good school’.



STUDENTS

St Matthias students are:

- smartly dressed;
- motivated to learn;
- happy;
- thoughtful and kind;
- responsible for each other.

All students can expect to receive exceptional care, support and guidance.

LEARNING

Learning at St Matthias is:

- engaging and connected to real life;
- delivered by innovative teachers who work with learners in a variety of settings;
- interactive, collaborative and personalised.

All St Matthias students have their individual needs met and have 24 hour access to learning.



CURRICULUM

The curriculum at St Matthias is:

- broad and balanced allowing students to develop a wide range of knowledge, skills, attitudes and understanding;
- planned to ensure students are ready for the next stage;
- designed to get the very best from everyone.

There is no particular 'subject specialism' at St Matthias. All subjects are important and students can expect the best in all areas.

SCHOOL FACILITIES

The facilities have:

- collaborative spaces with specially designed furniture;
- specialist rooms with the latest equipment and technology;
- self-contained spaces designed for multi-disciplined teaching;
- multi-sports provision.

St Matthias is a welcoming environment that inspires learning.





TECHNOLOGY

St Matthias offers the latest technologies including mobile devices. This means:

- learning can take place anywhere in the building or beyond;
- students are able to access their work wherever they are;
- access to technology for all students leads to greater participation, engagement and progress.

OPPORTUNITIES

St Matthias students are able to:

- experience links with Colleges, Post 16 Centres and Universities;
- organise charity and fundraising events;
- have a say in shaping the future of their school;
- visit new and exciting places and have access to visiting experts.

St Matthias champions experiential learning.



57.1% of students achieve 5+ standard passes including English and Maths

GCSE Subjects

59% of students achieve a standard pass in English and Maths.
80% of students achieve a standard pass in English.
64% of students achieve a standard pass in Maths.
15% passes at Grades 9-7.
46% passes at Grades 9-5



BTEC Subjects

96% pass rate.
24% of all grades were Distinction or Distinction*.





- Innovative teaching pedagogy.
- New technology throughout the building.
- Flexible teaching spaces.
- Teaching spaces that promote collaborative learning.
- A variety of different sized teaching spaces to suit various teaching styles.
- Specialist rooms equipped with the latest equipment and technology.
- Sports venues with a variety of full sized courts.
- Multi-sports facilities.
- Fully equipped Food Technology room.
- Specially designed spaces for vulnerable students.
- Several self contained spaces designed for multi-disciplined teaching.
- Several dining venues.
- Latest technology to support learning through mobile devices.
- A compact three-storey school.
- Collaborative spaces with specially designed furniture.
- Well lit, temperature controlled and well ventilated spaces.
- Landscaped frontage leading to a welcoming reception area.
- Extensive recreational spaces.



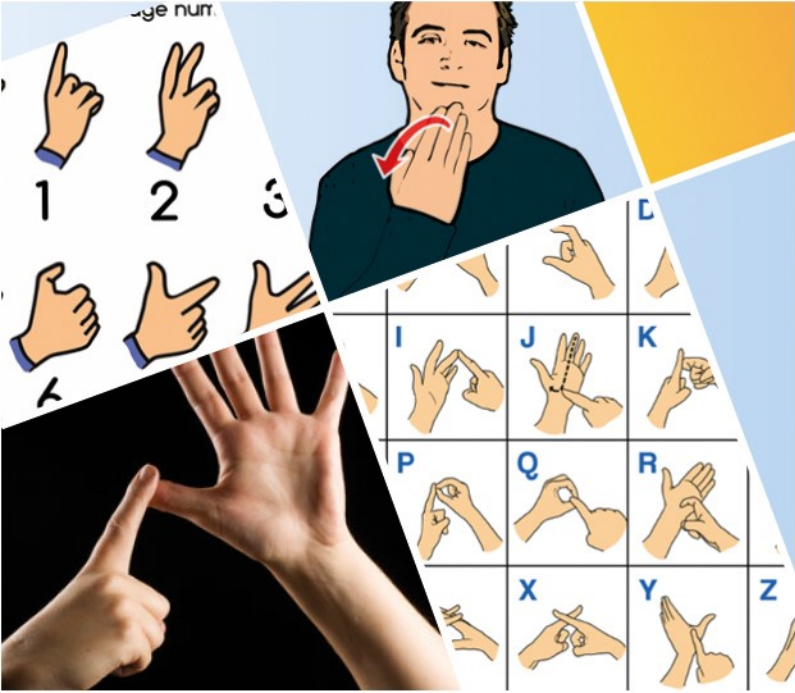
Student Welfare supports students and their families in a holistic way. We offer a range of alternative services including family sessions, counselling, group works and one to one discussions. We work with outside agencies to ensure conjoined working and smooth transitions for our students. The aim of Student Welfare is to ensure we do everything possible to meet the needs of identified students in order to help them to reach their full potential.

“When I have counselling I feel so comfortable talking to someone and getting things off my chest. It makes me feel much happier. Thank you.”

“They help you no matter what. The staff are super, great and are always willing to talk to you.”

“I like the way people respect me and the staff are great.”

“They make me feel like I’m not alone.”



The aim of the Deaf Resource Base is to make sure deaf students are able to:

- Achieve their full potential.
- Develop academically, creatively and socially.
- Become confident and independent citizens.

Deaf students have different ways of communicating. Some deaf students use British Sign Language (BSL), others use Sign Supported English (SSE) or speech, listening and lip-reading. Deaf students are encouraged to adapt their communication to match the people they are working with.

Gold, Silver Bronze Commendations

- Awarded weekly
- Nominations from staff
- Names displayed around the school
- Phone calls, letter home.

Commendation Categories:

Form Tutor nominations = Commendations

Year Leader nominations = Commendations

Most Improved Students = Commendations

St Matthias Student of the Week = Commendations



Subject Nominations



- Awarded each half term
- Letters/postcard home = Commendations

Phone calls, texts, letter, verbal praise feedback

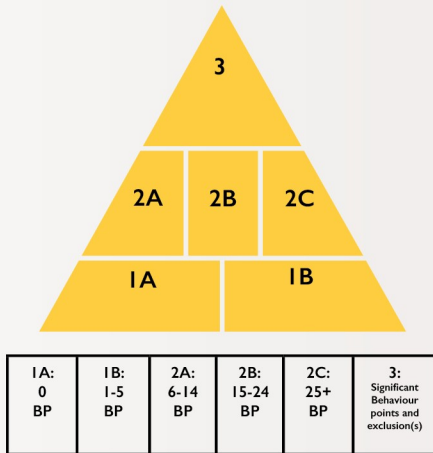
- Regular communication with families is all logged as interventions.
- Students achievements and improvements are recognised and celebrated.

All students are in Behaviour Target Groups. The purpose of this is to closely monitor the behaviour of all students and not just those that present the most concern.

St Matthias has very high expectations for behaviour and if a student doesn't meet these they receive behaviour points. Each half term behaviour is reviewed and the behaviour points are added up so that the students are put into the relevant target group. Students and their families then receive the relevant support according to their level of need. The target groups also motivate students as improvements are rewarded. All students should aim to be in Behaviour Target Group IA.

Half termly Form Tutor Updates ensure all families are fully aware of the Behaviour Progress their child is making.

Behaviour Target Group



BP = Behaviour Points

1/2 Termly Form Tutor Updates



St Matthias uses the latest Apple technologies. The flexibility offered by mobile devices means that:

- lessons can take place anywhere in the building or beyond
- students are able to access their work wherever they are
- access to technology for all students will lead to higher percentages of participation, engagement and progress.

St Matthias students will lead the way on technology to support education.



The Reading Room is our reading hub that provides students with a comfortable environment in which to immerse themselves in the latest 'Big Read'!

'To Read is to Succeed', and the Reading Room offers students of all abilities and levels of English access to a wide range of reading materials that promote their continued development in reading across all subject areas.

Students are able to use the room before school, at break and during lunchtimes. The Reading Room is also available throughout each school day for small group activities and 1:1 tuition.



At St Matthias we prepare all students with the skills to be able to confidently tackle the new Mathematics GCSE, with selected students also studying Further Mathematics GCSE and Statistics GCSE.

All students follow a personalised and challenging new pathway that enables them to develop a mastery of key skills, become fluent in the language of Maths and extend their learning to gain confidence with reasoning and problem solving. The use of the latest technology in all lessons helps us to deliver exciting, varied and bespoke lessons for students, inclusive of all abilities and needs.

The progress of all students is paramount to staff and so provision is made every day for a Mathematics after school club, Mathematics intervention and also holiday revision sessions.



At St Matthias we follow a 5-year programme of Mastery in Science which culminates in the Edexcel GCSE for combine science at the end of year 11.

Year 7 and 8 provide a fundamental introduction into science and its importance in the world in which we live. There is an emphasis on practical and investigative skills and the retention of Scientific principles.

In year 9 we start some GCSE content which allows the embedding of knowledge and skills and provides a steppingstone into years 10 and 11. We study Edexcel GCSE combined science which is worth two grades at GCSE.

Science lessons allow you to discover how the world works, to question data and whether it is reliable and to understand the problems we will face on our planet.

Students can become doctors, forensic experts, archaeologists and much more.

Explore creative opportunities to learn about the world around you and your place within it.

ENJOY Science at St Matthias School.

"When I grow up Science will help me with my life choices." Jacob Chadwick

"Science is fun because you get to do really good experiments." Brodie Ketch

"Science is brilliant because of all the practical activities." Chloe Scott



Learning a language helps develop students into global citizens. Language learning has many benefits such as improving memory, enhancing problem solving skills as well as improving confidence and communication skills. Spanish is spoken by over 400 million speakers around the world and therefore offers great opportunities for future employment.

At KS3 students will learn Spanish through a mixture of ICT and taught lessons to help develop their digital competence alongside their language learning. All students have access to laptops in lessons to access language learning websites such as Language Gym and Languagenut.

At KS4 we follow the Pearson Edexcel syllabus for GCSE covering the key themes of:

- Identity and Culture
- Holidays and region
- School
- Work
- International and global dimension

Learning a language is a great life skill which creates opportunities for travel, business and adventure.



King Harold II
1066



Adolf Hitler



The Industrial Revolution



Florence Nightingale

History is taught as an exciting adventure into discovering who we are, who we were and who we can become! History enables us not only to understand our place in the wider world, but to predict the future by learning about the past.

KS3 and KS4 History provides our students with the opportunity to meet some great men and women of the past as well as gain an in depth understanding of the reasons behind war.

In KS3 students explore:

Year 7: The medieval realms - Battle of Hastings, Domesday Book, The Hundred Years' War, Medicine in the ancient times and local History

Year 8: The British Empire, Atlantic Slave Trade and core historical skills. WWI - depth study, including the Battle of the Somme, the role of General Douglas Haig as well as the long and short term impact of WWI.

Students will have the opportunity to study GCSE History. Students will follow the Edexcel exam board, in which they will study: Anglo Saxons and Norman England, American West, Weimar Republic and Nazi Germany and Medicine through time and medicine on the Western Front.



Geography is the study of the physical features of our planet (land, sea and atmosphere) as well as its living inhabitants and the ever-changing dynamics between them.

Students of geography learn how humans are affected by their physical environments - and how humans impact on them. They apply their maths and science skills routinely to real-world situations and are encouraged to understand different viewpoints, values and attitudes.

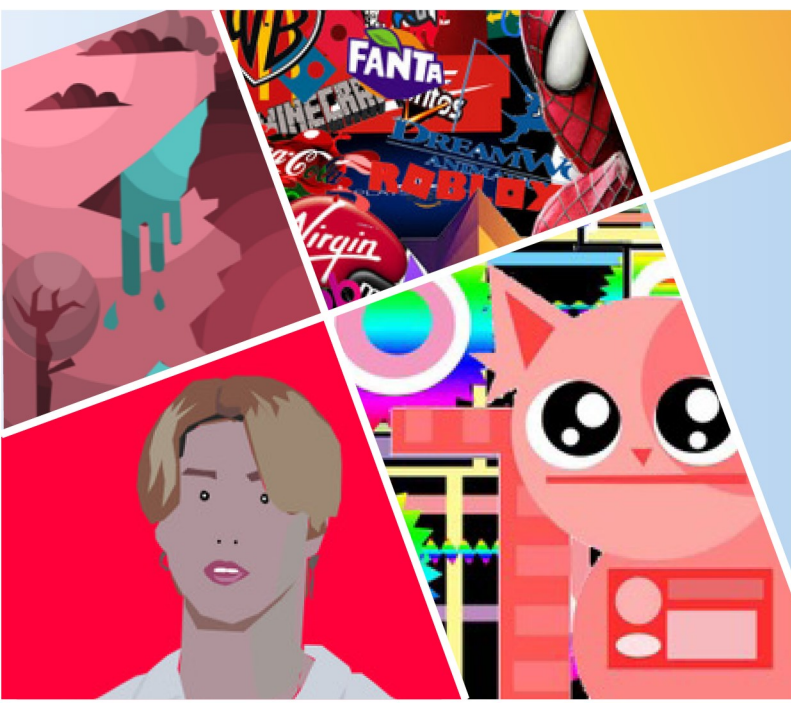
Geography helps students to be more socially and environmentally sensitive, informed and responsible citizens about

- The places and communities in which they live
- Earth's natural environments and the pressures they face
- The interconnectedness of the world and our communities within it
- How and why the world is changing, globally and locally
- How human actions contribute to those changes
- The choices that exist in managing our world for the future



Year 7 and 8 students follow a course that develops their drawing techniques and talents in producing artwork. They will widen their knowledge of historical and contemporary artists to enable them to explore different materials and styles of art, and grow in confidence when producing their own work.

Students with a particular interest and ability may opt to study Fine Art to GCSE level, during which they will build on the skills learned in KS3, extend their knowledge of contextual artists and develop personal responses to a variety of themes.



Graphic Communication is an exciting, dynamic and continually evolving field. This course consists of projects where students will be introduced to our Mac Suite and Adobe Photoshop, through a range of Graphic Design subjects including illustration, typography and design for print. Each project starts off with a brief and students research designers, explore ideas, experiment with different techniques, refine their designs before presenting a final outcome.

Year 7 are taught a variety of digital design skills and techniques using Adobe Photoshop, which are then built upon throughout Key Stage 3 and students have the opportunity to continue in Key Stage 4 to GCSE Level.

All students have the opportunity to submit work for the Wolverhampton Digital Awards.



Media is everywhere in our society. Films, television, magazines, newspapers and radio to name just a few.

Students will learn about different types of media products and analyse and evaluate their effectiveness. They will also look at WHY media products are effective and how they influence the modern world.

Students will also be given the chance to explore their creativity through making different types of media products in KS3 and create coursework in KS4.

GCSE Media Studies is an option for GCSE.



As the **BTEC Tech Award in Enterprise** is a practical introduction to life and work as an entrepreneur, you will:

- Develop an aptitude in planning and carrying out an enterprise activity.
- Develop the knowledge that underpins the effective use of skills that can affect the performance of an enterprise.
- Develop attitudes and ways of working that are important for enterprise.
- The course has two internally and one externally assessed components. These components build on each other to motivate you by helping you put what you have learned into practice and grow in confidence.

Component 1
Exploring
Enterprises

Component 2
Planning for
and running an
enterprise

Component 3
Promotion and
Finance for
Enterprise



HEALTH AND SOCIAL CARE



values



Health and Social Care is the combined study of Sociology, Psychology and Physiology. Students will engage with case studies, debates and research projects to learn about a number of health and social care related topics including: development, healthcare and values for social care.

As this is a vocational qualification it is contextualised and enhanced by visits from vocational specialists in the Health and Social Care field and trips with partner organisations such as the local NHS Trust.

Health and Social Care Tech Award Level 2 will prepare students for a range of pathways at post 16 including: Health and Social Care Level 3, Sociology and Psychology A Level, apprenticeships with the NHS and routes in Social Work, Social Care, Public Services or Childcare.



Our Year 7 and 8 students will be taught a range of preparation and cooking techniques during their cooking and nutrition lessons. They will study the importance of a balanced diet, how to work safely and hygienically, the sensory properties of food and where our food comes from.

Our KS4 students with an interest and a flair for cooking follow the WJEC Level 1/2 Vocational Award in Hospitality and Catering. Students will look at the structure of the industry, job roles and responsibilities, food safety and legislation within the work place. Alongside this they will continue to build upon their planning, preparation, cooking and presenting skills. The qualification consists of an external exam and controlled assessment, which includes the planning, preparation and cooking of a two-course meal with accompaniments within a given timeframe.



Key Stage 3 and Extra Curricular

The Dance Department offers weekly after school clubs in contemporary and street dance for all ages and abilities. We create routines, develop flexibility and work towards showcases and productions. The Dance and Performing Arts Department attend lots of workshops with professional practitioners in a range of dance styles inside and outside of school. We also go to see shows at local theatres and performance hubs. Previously we have been to see shows such as; Bob Marley The Musical, The Nativity and West Side Story. Dance and accurate replication of actions can also be accessed through the PE curriculum.

Key Stage 4

Currently the Dance Department offer a Btec Tech Award in Performing Arts, this allows students to access dance, music and drama but specialise in one area. The course is made up of 3 components: 2 that are internally assessed and 1 that is externally assessed. The 3 components are built and structured to explore, develop and apply:

- Component 1 - 'Exploring the Performing Arts' (30% of the course)
- Component 2 - 'Developing Skills and Techniques in Performing Arts' (30% of the course)
- Component 3 - 'Performing to a Brief' (40% of the course)

Over the two year course students have the opportunity to explore different styles, watch live work, take part in workshops, develop skills and practical techniques and perform to an audience.



Music is a creative and exciting subject and gives all students in KS3 at St Matthias the opportunity to listen, compose and perform music from many different genres and cultures. The intention of the curriculum design is to allow students to explore the three strands of study that would be the focus point at KS4, whilst exploring a wide range of musical genres through a practical way.

The implementation of this curriculum means students will study a range of topics including instruments of the orchestra where they also learn to play trumpet and trombone as well as World music topics such as Samba and Djembe drumming. The intention is that students understand the elements of music (dynamics, rhythm, structure, etc.) via music making and explore creativity.

As a new option at KS4 from September 2019, students will be able to take GCSE music. This entails the same three elements as taught in lower school; listening, composing and performing. Students who take GCSE Music as an option would need to complete a solo and group performance, two compositions in various styles (one is a free choice so students can be really inventive here!) and learn about music of all different styles to be able to complete an exam at the end of Year 11.



Our aim as a department is “to strive to develop confident, physically educated individuals who have a passion to continually learn and grow through life”.

In Key Stage 3, students at St Matthias School will have the opportunity to develop skills in a variety of sports. Students follow a broad and balanced curriculum allowing the opportunity to participate in a wide range of sports. Students will learn skills, techniques and tactics in team, individual, striking, racket and invasion sports/activities. Students will be assessed through a ‘head, heart, hands’ approach, where we look to develop not just the physical skills of the individual but also the creative thinking and on how to lead healthy active lifestyles which play an important role in our everyday lives. Moreover, we also look to develop department character values that we see as an important factor in moulding a well-rounded individual that will succeed not only in physical education but in all aspects of life.

The aim of Key Stage 3 is for students to become ‘physically educated’ through a variety of activities. We aim to ensure students enjoy Physical Education, focusing on the development of children’s affective, cognitive, lifestyle, psychological and social domains through a variety of different learning contexts. From here, students will gain the confidence to physically and mentally prepare for the Cambridge Nationals Sport studies course which they have the opportunity to opt for in Key Stage 4, alongside core PE. In KS4 core PE our students will be given a pathway route which is best suited to their interests (competitive, creative, health and fitness, participation). Students will continue to develop their learning leading them to show behaviours that meet the aims of the national curriculum for Physical Education.

Further to this we have extra-curricular clubs after school in Football – Boys’ and Girls’, Rugby, Badminton, Basketball, Fitness, Handball, Netball, Table Tennis, then in the summer Athletics, Cricket, Tennis and Rounders. In all these sports the school competes with other schools in the local area. Students have the opportunity to compete in intra school competition as well as inter school competitions, and we attend city wide tournaments and events to allow students to develop their physical and social skills further.



Personal, Social, Health and Economic (PSHE) education is a school subject through which pupils develop the knowledge, skills and attributes they need to manage their lives, now and in the future. From making responsible decisions about alcohol to succeeding in their first job, PSHE education helps pupils to manage many of the most critical opportunities, challenges and responsibilities they will face growing up.

These skills and attributes help pupils to stay healthy, safe and prepare them for life and work in modern Britain. PSHE education helps pupils to achieve their academic potential, and leave school equipped with skills they will need throughout later life.

At St Matthias PSHE is set according to the most recent guidelines from the PSHE association and includes the statutory Relationships and Sex (RSE) aspects of the curriculum. PSHE also promotes citizenship and the spiritual, moral, cultural, mental and physical development of pupils working in close collaboration with the student welfare team in school.



ST MATTHIAS SCHOOL

Deans Road, Wolverhampton, WV1 2BH
Tel: 01902 556400

Website: www.st-matthias.com
Email: enquiries@st-matthias.com

